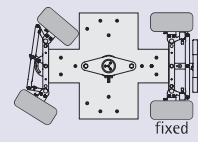
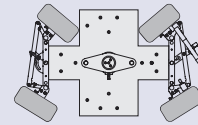


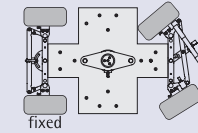
The GF-Quad Dolly in 4 wheel steering mode



Front wheel steering



4 wheel steering

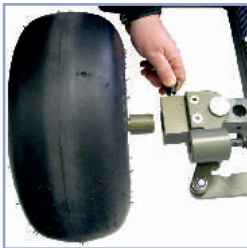


Rear wheel steering

GF-Quad Dolly

Designed to provide the ultimate in mobility and versatility. With its 3 way steering system the GF-Quad manoeuvres on small sets like no other platform dolly.

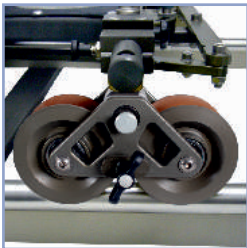
Dimensions	pneumatic wheels	track wheels
Dolly platform	120 x 74 cm 47" x 29"	112 x 74 cm 44" x 29"
With side platforms	120 x 104 cm 47" x 40"	112 x 104 cm 44" x 40"
Weight	40 kg / 88 lbs	35 kg / 77 lbs



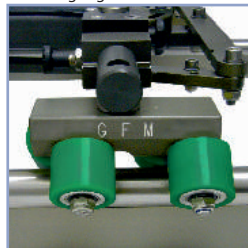
Quick release wheels



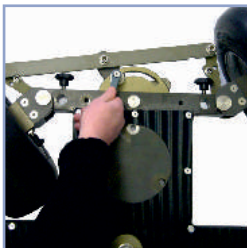
With quick and easy to mount levelling legs



GF-Track wheels



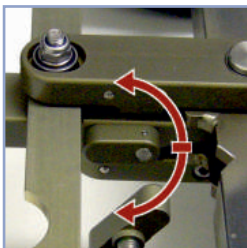
Skateboard wheels



Steering transmission lock off



Side platform, snap lock



Steering mode shift lever



Removable steering rod with angle adjustment

Features

Instant selection of 3 steering modes (switch lever): Front wheel steering, Rear wheel steering, 4 wheel inverted steering

Extremely fast swap over from pneumatic to track wheels (no tools)

Mounts on standard dolly track (62 cm / 24,5 ")

Fits with ease thru doorways (74 cm / 29 " dolly width)

Steering rod with step-less angle adjustment. Removable. Folds flat for compact storage.

Lockable steering transmission for perfect straight moves or reproduction of circle shots

Smallest circle = 80 cm / 31 "

Quick release pneumatic, track or skateboard wheels

Removable, telescopic push bar for track and doorways. Mountable at both ends.

Lightweight but stable design (24 kg / 52 lbs platform weight)

Hard coated aluminium construction



With GF-Mini Jib and side platforms. Shown in front 2 wheel steering mode



With GF-Track wheels and telescopic pushbar

GF-Quad Dolly



Grip Factory Munich GmbH
Fürholzener Straße 1
85386 Eching/Munich
Germany

Tel.: +49 (0)89 / 31 90 12 90

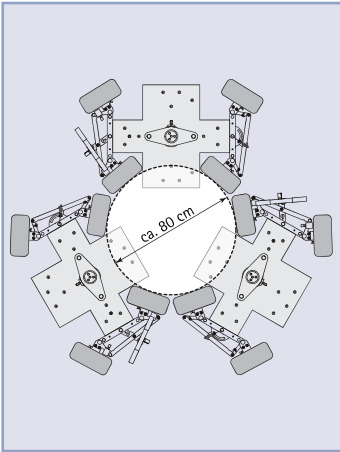
Fax: +49 (0)89 / 31 90 12 99

E-Mail: info@g-f-m.net

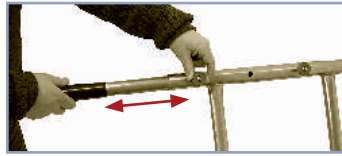
Internet: www.g-f-m.net

Link to website





Extremely narrow turns (80 cm/ 31")



Adjustable push bar



Compact transport, folded steering rod



Integrated connection for tripod



"The GF-Quad is a great little dolly and our clients love it. It's always out on jobs, working! From a rental house point of view, a winning investment"
 Mark Fursstedonn (Panavision UK – Operations Director)

On tight sets the GF-Quad simplifies shooting enormously. Mainly because of the various steering modes, making it really manoeuvrable. I also like to use it as a Steadycam Dolly.
 Daniel Koppelkamm (D.O.P.), BVK

On the "Bourne Supremacy" I used the first prototype of the GF-Quad every day. I was amazed by its mobility and manoeuvrability. The large pneumatic wheels allowed smooth, stable dolly moves and worked great on uneven terrain. Especially as a lot of the scenes were action shots with hand held cameras. The additional Euro-adapter on the platform was a real help for setting up very low camera positions at the side or rear of the dolly. Conclusion: the prototype was good but the series model is simply the best lightweight dolly I know of. By the way, it's often smaller than other dollies but always big enough.
 Dieter Bähr, Key Grip

