

J.L.Fisher

Motion Picture &
Television Equipment

Winner of the
cinecAward
"Special Award"

Patents Pending

SKATEBOARD WHEELS

FULLY ARTICULATED
EASY TO PUSH, EASY TO PULL
FRICTION FREE TURNING ON CURVED TRACK



J.L. FISHER® is a registered trademark of J.L. Fisher, Inc.

10.22.2014

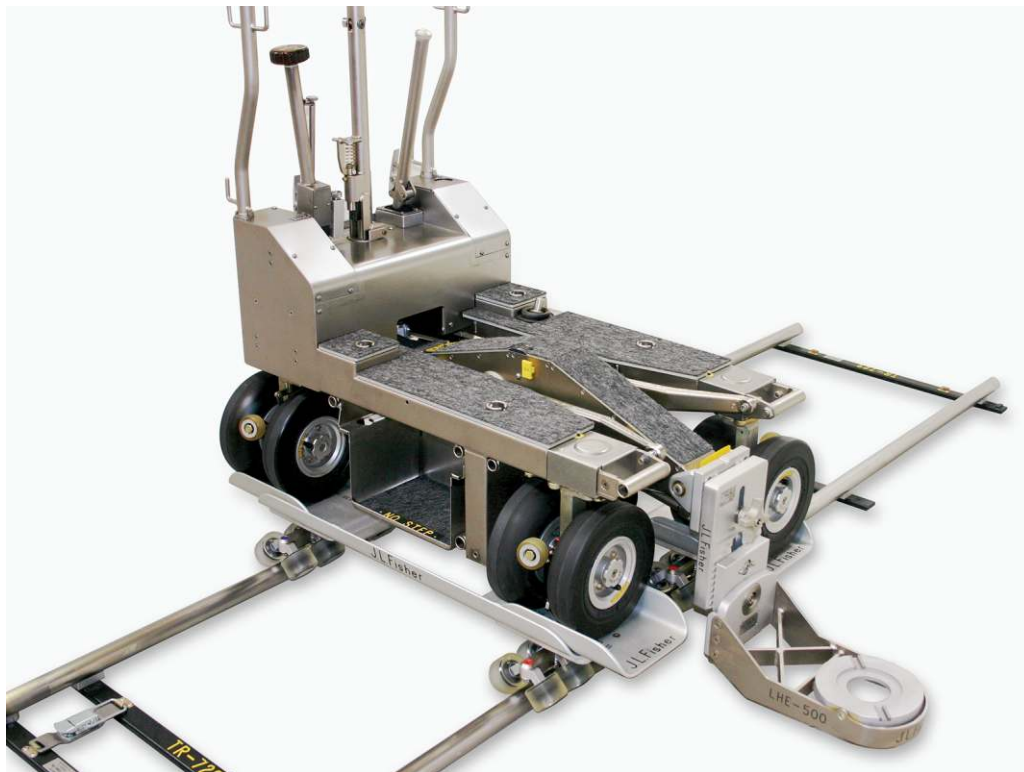
Caution: Use proper lifting techniques when lifting dolly.

The Skateboard Wheels incorporate articulating trucks allowing all 32 wheels to maintain contact with the track for better control and stability, on both straight and curved round track. Wheels are precision ground for smoother, quieter operation. Skateboard Wheels work with all J.L. Fisher Dollies and Jib Arms, including the Model 23 Jib. Maximum weight on the Skateboard Wheels is 2000 lbs.



10 Dolly - mounted on standard 24.5 inch track
(With no insert trays)

11 Dolly - mounted on standard 24.5 inch track
(With insert trays)



11 Dolly Chinese - mounted on standard 24.5 inch track
(With insert trays extended)

Note: The Model 9 & 10 Dollies cannot be Chinese - mounted

J.L. Fisher Skateboard Wheels (SBWS)

Patents Pending



10 Dolly

The channel properly fits the wheel.
Notice the three points of contact.



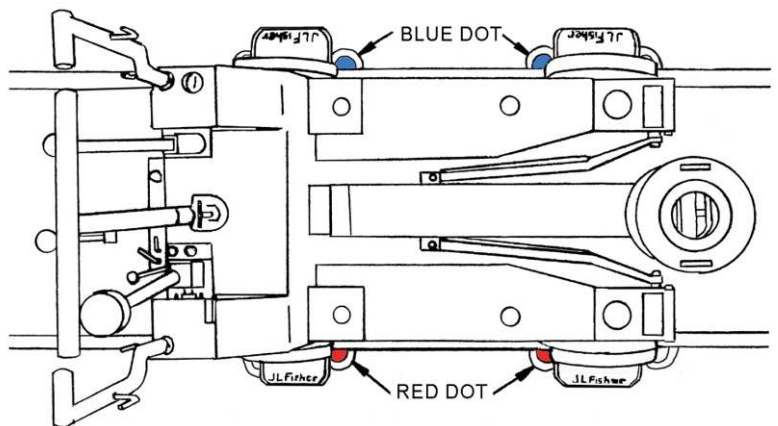
11 Dolly

Note: The trays are used for the Model 11 dolly, allowing a perfect fit to the wheel. Notice the three points of contact.



SBWS

Kit Includes: Case
SkateBoard Wheels (2)
Insert Trays (4)
Instruction Placard



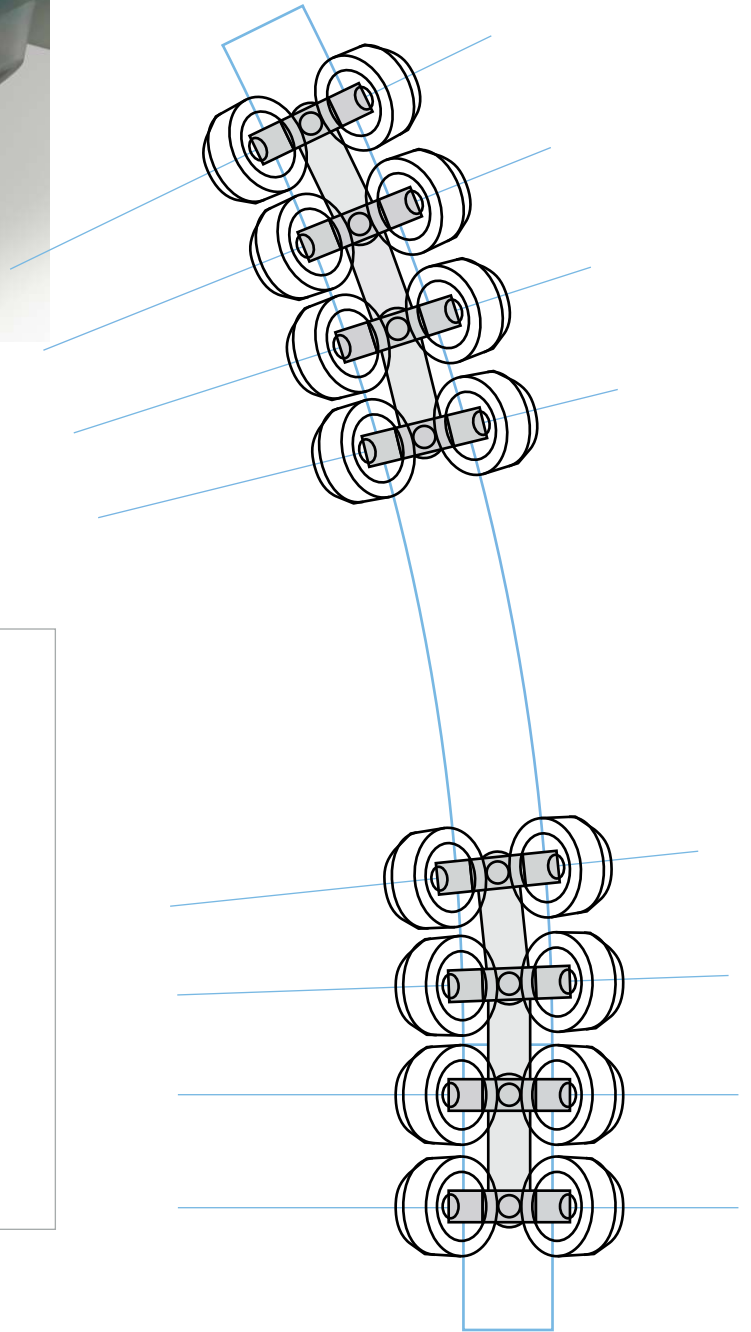
Note: When placing the skate board wheels onto the track, the red dots on the trucks must be on one side of the track, and the blue dots on the other side of the track.

ARTICULATING TRUCKS

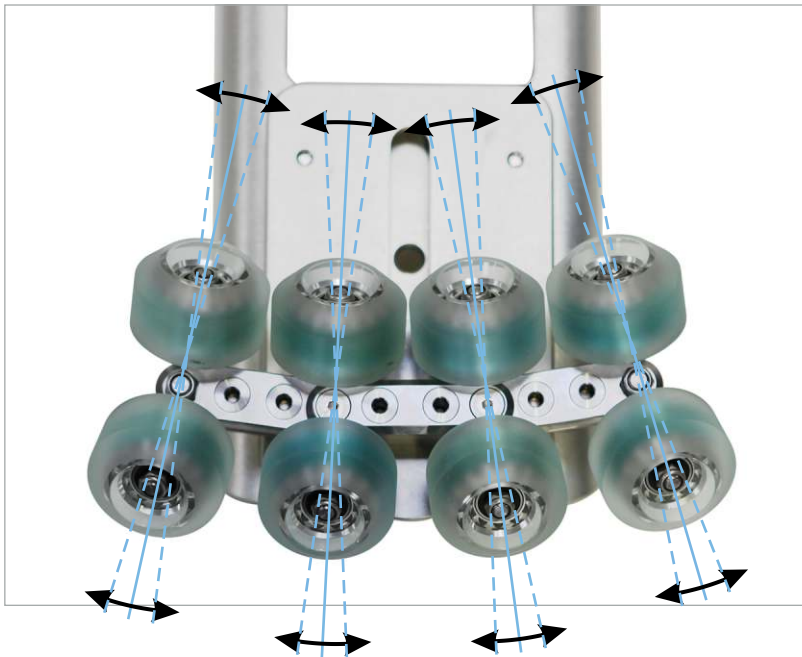
Patents Pending

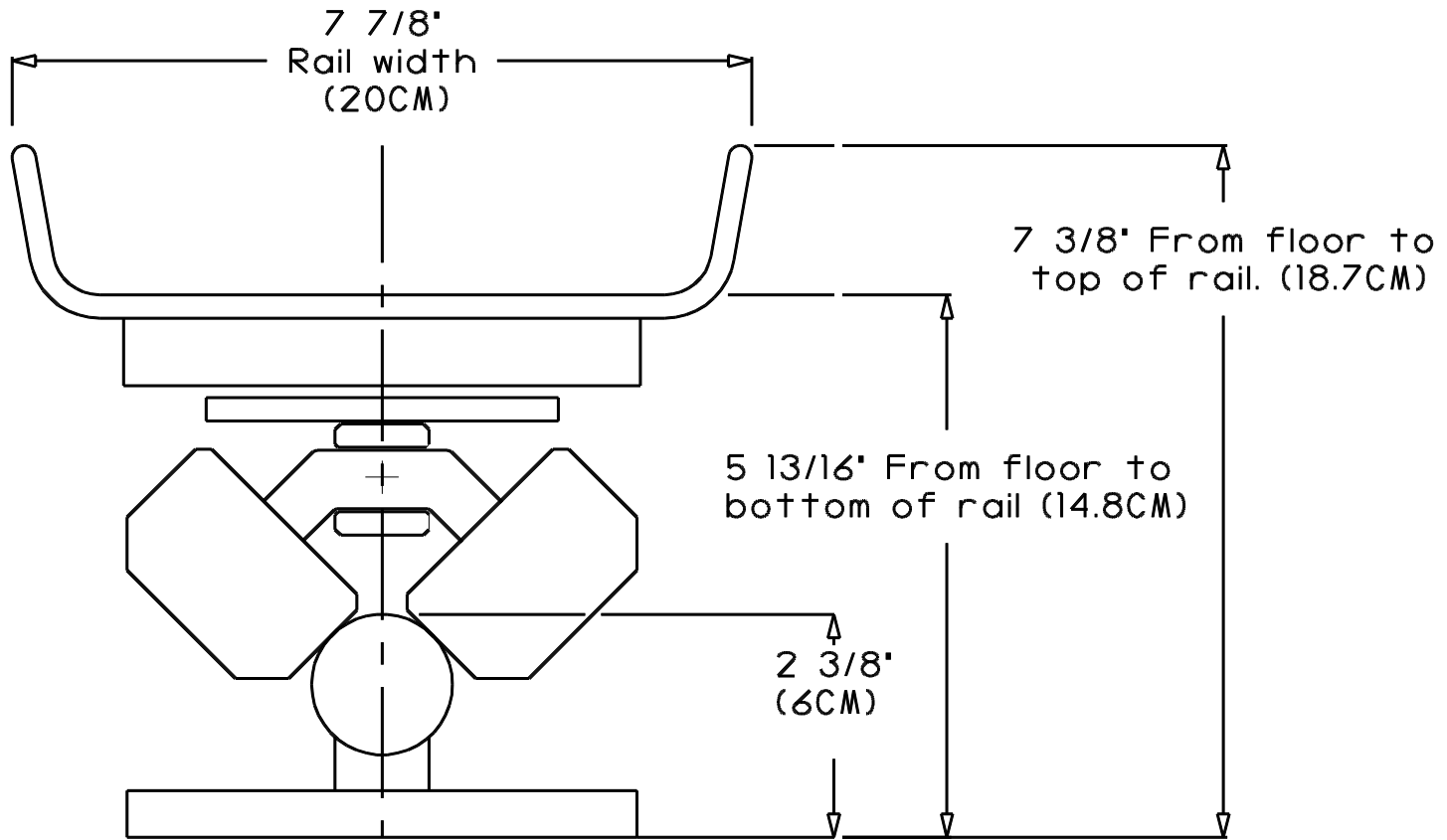


All 32 wheels maintain contact on both straight and curved round track.



EACH SET OF 2 WHEELS (TRUCK) CAN SWIVEL INDEPENDENTLY





Rails @ 32 1/4"(81.9CM) long. or 39 3/4"(101CM) with inserts extended

10.21.14 J.L. Fisher Inc. SBWS Basic Dim.

J.L. FISHER PRODUCTS ARE PROUDLY MADE IN BURBANK, CALIFORNIA U.S.A.

J.L. Fisher, Inc. Motion Picture & Television Equipment 1000 W. Isabel Street, Burbank, CA 91506 U.S.A.
Tel: (818) 846-8366 / Fax: (818) 846-8699
Web: www.jlfisher.com e-mail: info@jlfisher.com

J.L. Fisher, GmbH Emil-Hoffmann-Str. 55-59 50996 Köln, Germany
Tel: +49 2236 3922 0 Fax: +49 2236 3922 12
Web: www.jlfisher.de e-mail: info@jlfisher.de