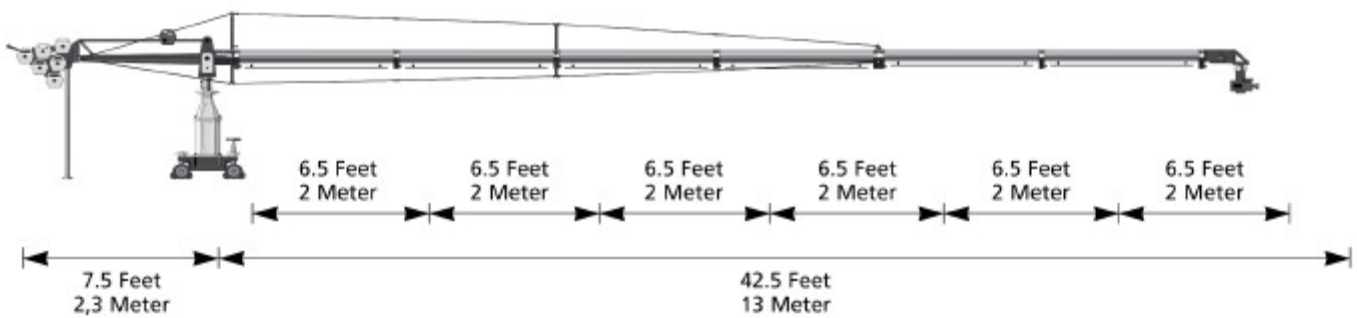


---

# Instruction Manual

## Swiss Jib Crane



# **Introduction**

Congratulations to your decision to buy or rent a **SWISS JIB CRANE**! We are very pleased that you have chosen our product, which combines state-of-the-art technology as well as the experience of many years in manufacturing camera cranes and dollies.

High-quality material and sound know-how, as well as a clever concept enable your **SWISS JIB CRANE** to do a professional job, which you will really enjoy when doing your responsible work at the set.

Your new **SWISS JIB Crane** is a high-quality tool, which enables the creative camera man to do an excellent job – fast and easy – with fantastic shots and camera drives.

The **SWISS JIB CRANE** is a product that has been created and built by experts for experts – to satisfy the high demands of every grip and camera man.

We hope that you will have a lot of pleasure with your **SWISS JIB CRANE**. In order to guarantee the highest security and reliability in our product at the set, please study our operating manual very carefully!

All the best  
Panther GmbH

# **Index**

<b>Theme</b>	<b><u>Page</u></b>
Introduction	2
Index	3
To the grip	4
Safety instructions	4
General instructions	5
Check list for assembly	6
Operating- and safety advice	7-8
Assembly instruction	9-18
First operation	19
Service and maintenance	19
Parts	20

## **To the grip**

Sloppy assembly, disassembly and operating have created and will also create in future damages and physical injury, as well as death of involved or even uninvolved persons.

The following operating instructions should explain to the grip how to work with the camera crane and should also make aware and give advice to take care of possible dangers. Accidents can only be avoided if the dangers are well known and the common sense is activated.

## **Safety instructions**

Please start working with the crane only after studying the complete instruction manual and understanding everything.

Security advice, measurement and weight indications, as well as the repair and maintenance instructions have to be observed carefully.

Lifting, swivel and operating range of the crane including the complete outrigger must be kept free. The safety distance of  $\geq 0,5$  m to all parts of the surrounding have to be kept free from all sides.

Attention: It is not allowed to use the crane on inclined planes. The CRANE has to be secured so that it cannot slip away. The underground has to be hard and inflexible. The minimum carrying capacity of the underground has to be  $3000 \text{ kg} / \text{m}^2$ .

The crane should never be left unattended in assembled state. It has to be secured that persons without authorization cannot use the crane. If necessary adequate measures against heavy wind or storm have to be taken.

Before starting operation the crane's stability with the maximum tilting moment has to be checked.

When working in the studio or with tracks it has to be observed that no hard or loose parts can get under the wheels. Also slight unevenness can endanger standing- and driving security.

## **General instructions**

Only competent persons are allowed to work with the SWISS JIB CRANE. Panther GmbH offers training work shops which will enable the participants to work with the Panther Swiss Jib Crane. The participants will receive a certificate at the end of this seminar. For more information regarding the actual dates or to book, please contact 089/61390001.

Repairs should only be carried out by the manufacturer or persons, who received a special training. Panther GmbH offers service seminars, which can be held according to your desires. Should you be interested, please contact 089/61390030 (Panther-Service).

The SWISS JIB CRANE may only be assembled according to this operating instruction.

The instruction manual has to be studied and understood completely.

In connection with the SWISS JIB CRANE no air tires may be used at the base dolly.

Maximum wind speed: 40 km/h.

Using the SWISS JIB CRANE is not allowed if the wind speed exceeds 40 km/h.

Please observe DIN 15019 and start early enough to disassemble the crane if a storm comes up.

The SWISS JIB CRANE may only be assembled according to the assembling versions shown in this operating instruction.

# **Check-List for Assembly**

**Take your time to securely assemble the crane, to check and to test the crane before use.**

## **Transport**

✍ Do not expose the outriggers and balance rods and especially the cast platform to heavy strokes. The carbon-fiber-outriggers have to be exchanged in case of damages.

## **Auxiliaries**

- ✍ Water level
- ✍ Support device
- ✍ Small ladder / rostrum

## **Ground**

- ✍ No slope: check with water level
- ✍ Use sub-base if slope
- ✍ If the ground can only be loaded up to 3000 kg/ m<sup>2</sup> the load has to be distributed by a reasonable sub-base.

## **Sub-base**

- ✍ No slope: check with water level
- ✍ Min. 3000 kg / m<sup>2</sup> load capacity of sub-base

## **Assembly**

- ✍ Check whether all necessary parts are available
- ✍ Assemble according to operating instruction
- ✍ **IMPORTANT:** Platform and counterweight bucket have to be supported under the load center of gravity if the outrigger is loaded in only one direction. The safety hints of the operating instructions have to be observed.

## **Safety instructions**

☞ Observe safety instructions

## **Operating and safety advices**

Do not leave loose parts on the platform or the remote head mount. They can fall and injure persons.

The crane may never be left unattended in assembled state. The Crane has to be disassembled or protected against wind when out of service. Please observe DIN 15019 part 1/6.1.3 for a timely disassembly of the crane if a storm comes up.

The vertical and horizontal swiveling area must be kept free. The safety zone of  $\varnothing$  0,5 m must be kept free in all directions. Please look out for possible pinching dangers during assembly and operation.

When turning and rotating the crane outrigger and during curve drives, centrifugal forces can appear which can endanger the standing stability when added.

For safety reasons it is obligatory that the crane stands/drives on absolutely hard, stable and inflexible ground, which is completely leveled. Please pay attention that no hard or loose objects can get under the wheels, so that the standing and driving stability of the crane could be endangered. Example: Cable in the studio, etc. This also applies when working with tracks.

Do not exceed the maximum payload of the platform or the remote head mount. Please only use the maximum number of weights allowed which fit into the counterweight bucket. The use of additional weights, such as sand bags, is not allowed.

For the payload of the base, tracks or supports the complete crane weight including all accessories and persons have to be considered.

Support material such as wedges and blocks have to be fixed in a way that they cannot slip away, fall out or be pushed away.

At the end of the tracks clips or similar safety stops have to be fixed to avoid that the crane could fall down.

Please check the crane daily with regard to its function, to damages and missing parts. Damaged or missing components have to be replaced by new ones immediately.

Mark the operating range (pan and tilt area) of the crane with flags, label or similar material. Keep all persons out of the operating area in order to avoid anybody to be hurt by the base dolly or the outrigger.

Do not use the crane in the vicinity of high-tension lines.

The crane may not be operated if there is the danger of being struck by lightning. After shooting the crane has to be dismantled or secured against wind. Please observe DIN 15019 part 1/6.1.3. to have enough time to dismantle the crane if a storm comes up.

After shooting, especially after use under dirty, dusty, sandy, humid and salty conditions, the crane has to be thoroughly cleaned and serviced.

Take care that the outrigger does not touch anything within the rotating area.

Check the surrounding of the crane for possible dangers.

Stop working with the crane immediately, even if only a small part is damaged or not mounted the correct way.

# Assembly Instruction

In the following the assembly of the **SWISS JIB CRANE Version 6** is shown  
Versions 4 and 5 are assembled the same way, using less outriggers.  
Versions 1-3 are assembled without bracing kit.



## **1. Underground**

Control if the underground is even. In case of more than 1% slope, either a special base or tracks have to be used. Load-carrying capacity of the underground min. 3000 kg / m<sup>2</sup>



## **2. Sub-Base**

Has to have a load-carrying capacity of a minimum of 3000 kg / m<sup>2</sup>. The sub-base has to be mounted very carefully and without any slope.

Also the tracks have to be laid out very carefully and without any slope. Special attention has to be paid to the loose supporting material (for example wedges), so that they can neither slip away nor be displaced by mistake.

## **3. Base**

Base has to be braked, so that it cannot slip away during assembly. If the ground is not 100% even, tracks have to be leveled and supported.



#### 4. Bazooka

Put the Bazooka onto the base and tighten with screws.



#### 5. Fork

Put the fork onto the bazooka and tighten with screws.

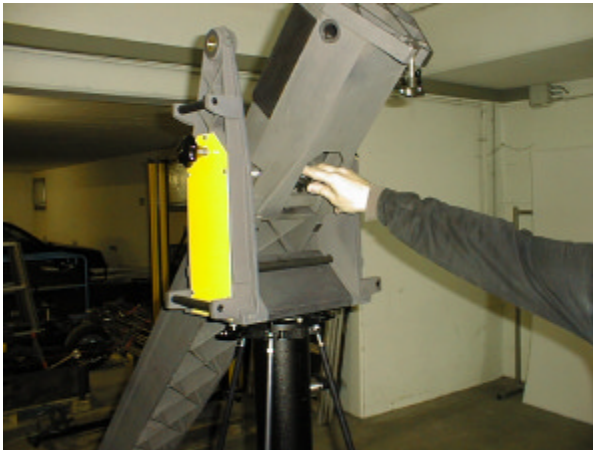


#### 6. Arm part of Swiss Jib, rear

The arm part has to be put into the fork and the short segment has to be folded.

The straps of the fork axis have to be in the position that the short arm segment can be folded by 180°.

Attention: A ladder or a rostrum can be used as support for the outriggers during assembling.



### **7. Safety Screw**

The safety screw has to be tightened.



### **8.1 Balance Weight Rod**

It has to be mounted at the main axis. The cable has to be positioned in front direction. The upper axis is now inserted into the tube and secured with a 90° rotation (twist lock).

### **8.2**

The long screw is inserted into the connecting rod and tightened.



### 8.3

The bolt is pushed through the connecting plate and secured by a 90° rotation. (twist lock)



### 9. Mounting support

The mounting support is mounted into the drilled hole.

**The mounting support does not carry the total weight of all counterweights.**

**The front and back side have to be balanced the whole time.**

**Always add weights to the counterweight holder in order to keep a maximum of balance between the front and back load.**

### 10. Arm part no. 1

Arm part no. 1 with the thicker bolts has to be mounted first. It is marked with a yellow label and is the only arm part that fits at the base arm.



### 11. Arm part

At the bottom the arm piece is secured with the screw.



### 12. Counter weight holder

The counter weight holder is mounted and secured with the screw.



### 13. Bracing kit

The top spanner of the bracing kit has to be put into the upper hole of the base arm.





**14.**

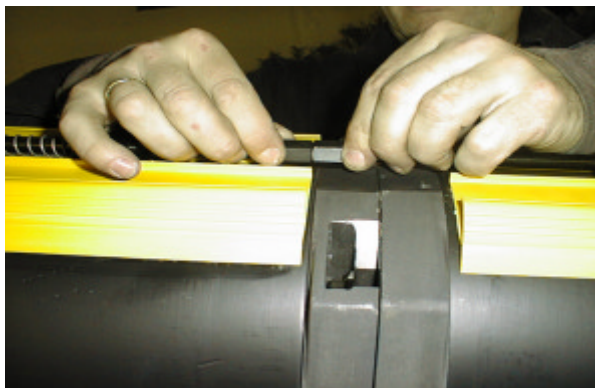
The rope is passed through the hole of the upper bracing kit and with the balance rod the arm piece no.1 is assembled by hand.



**15. Arm piece**

The second arm is mounted and secured with the screw.

**Always add weights to the counter weight holder in order to keep a maximum of balance between the front and back load.**



**16.**

The balance rods are assembled by hand.



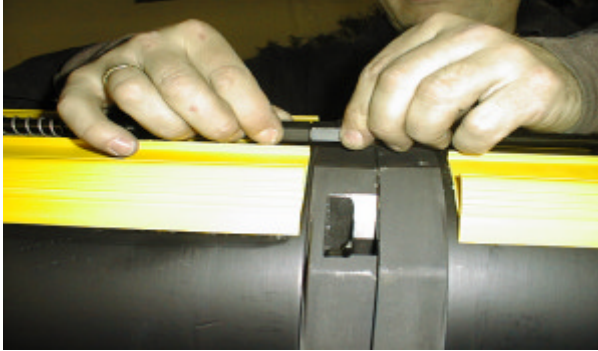
**17. Arm piece**

The third arm is mounted and secured with the screw.

**Always add weights to the counter weight holder in order to keep a maximum of balance between the front and back load.**

**18.**

The balance rods are assembled by hand.



### 19. Arm piece

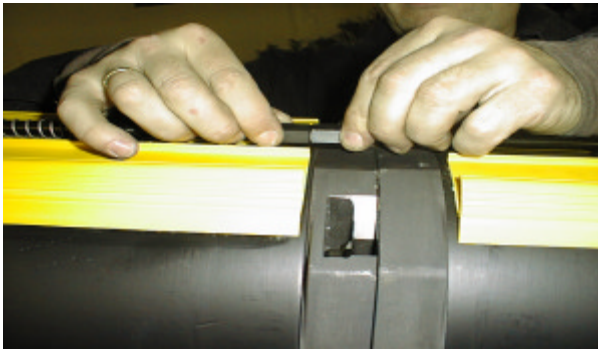
The fourth arm is mounted and secured with the screw.

**Always add weights to the counter weight holder in order to keep a maximum of balance between the front and back load.**



### 20.

The balance rods are assembled by hand.



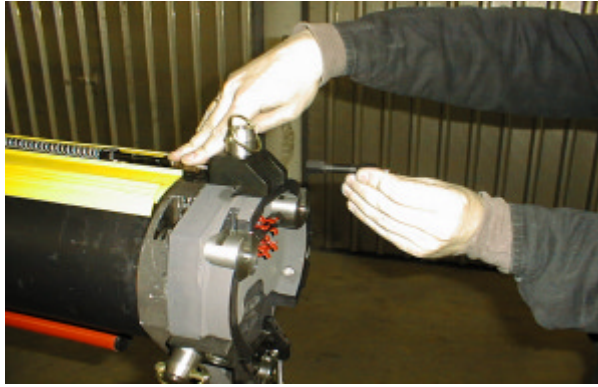
### 21.

The anchor plate is mounted like a arm piece and secured with the screw.



### 22.

The bridging bracket of the balance rod has to be mounted. (The second bridging bracket is a spare part)



### 23. Bracing kit

The two side spanners of the bracing kit are mounted.



### 24. Top rod support

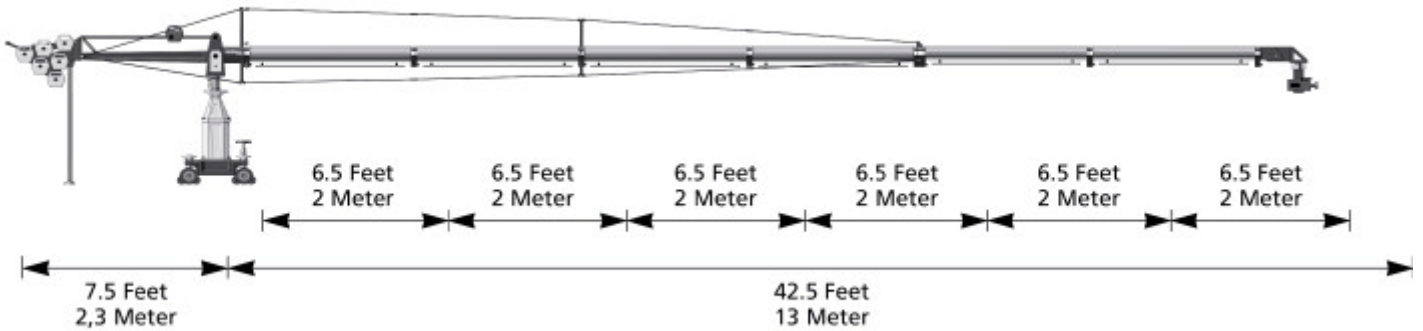
Put the top rod support of the bracing kit between arm no. 2 and arm no. 3. Make sure that the support is exactly in the middle of the connection between arm piece 2 and 3. If not, turn it by 180°. With the side screws the support is fixed.



### 25. Side rod supports

The safety screw has to be opened at first. Now the side rod support can be mounted and fixed with the two handle screws. Then the outrigger is secured with the safety screw.





## 26.

Fix the bracing kit according to the drawing

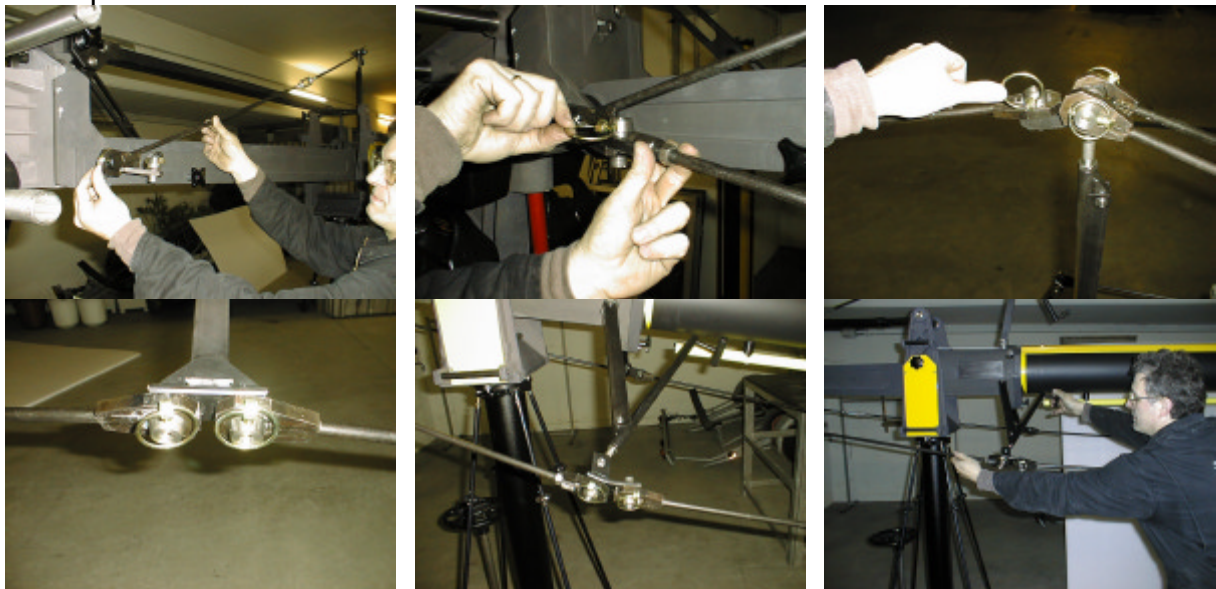
Secure every rod immediately with the safety splint.

The bracing kit has to be open until all rods are mounted and secured.

Attention: All front double rods are of the same type.

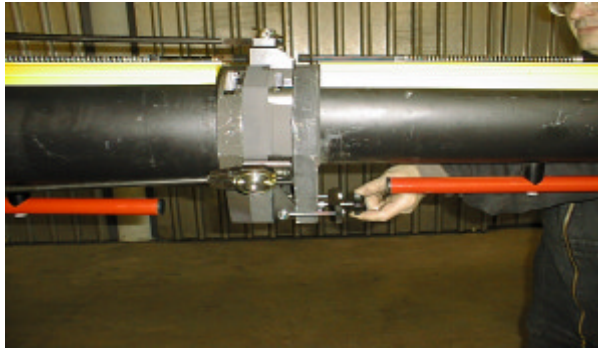
The two rods in the back with the side slips are mounted at the upper bracing kit and at the side bolts of the outrigger in the back.

The two rods in the back with the rotating ends are fixed at the side slips and at the side spanners.

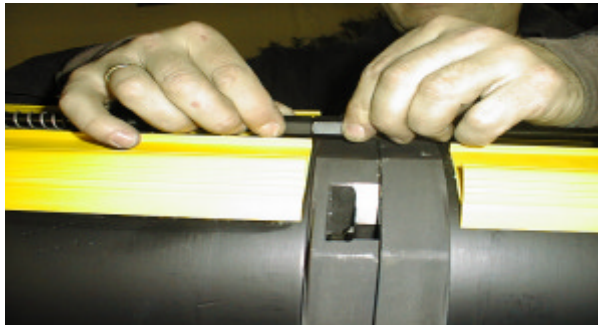


After all the rods have been mounted and secured, the bracing locks of the rods in the back are tightened. Finally the top spanner and the two side spanners are tightened.

The top spanner is always closed at first. When closing the third spanner you will see whether the tension is correct. With little pressure it has to be possible to close the spanner with one hand.



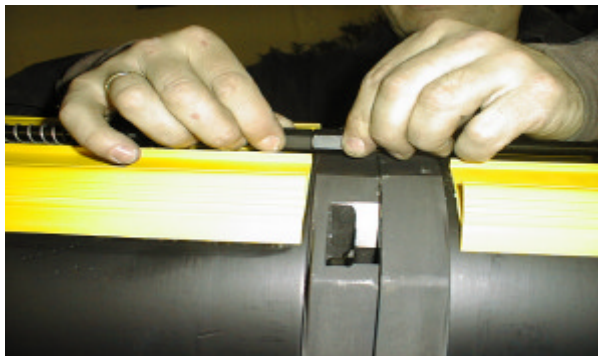
**27.**  
The fifth (thin) arm is mounted and secured with a screw.  
**Always add weights to the counter weight holder in order to keep a maximum of balance between the front and back load.**



**28.**  
The balance rods are assembled by hand.



**29.**  
The sixth (thin) arm is mounted and secured with a screw.  
**Always add weights to the counter weight holder in order to keep a maximum of balance between the front and back load.**



**30.**  
The balance rods are assembled by hand.



**31.**  
The head part, which can be leveled, is mounted at the last outrigger and secured with a screw.  
The rope is screwed together with the balance rod.



**32.**

With the screw at the end of the rope the head part is balanced.

**Always add weights to the counter weight holder in order to keep a maximum of balance between the front and back load.**



**33. Handle**

The handle is pushed into the weight holder and fixed there.



**34. Monitor holder**

The monitor holder is fixed at the rear outrigger.



**35.**

With the red balance weight the balance is adjusted.

**The disassembly is effected in reciprocal sequence!**

## **First Operation**

### **Important:**

Before loading the head part, the weight holder and before operating make sure that all connecting screws are tightened.

### **Payload:**

The payload on the head part is the weight of all weights fixed at the head part, for example remote Head, camera with accessories.

### **Max. payload:**

Version 1: 90 kg / (200 lbs)

Version 2: 80 kg / (175 lbs)

Version 3: 70 kg / (150 lbs)

Version 4: 70 kg / (150 lbs)

Version 5: 45 kg / (100 lbs)

Version 6: 25 kg / (55 lbs)

### **Max. wind speed: 40 km/h**

## **Service and Maintenance**

The Panther Swiss Jib Crane is a very solid piece of equipment that guarantees reliable work without a lot of maintenance work.

To guarantee a **long life and stable quality**, it is advisable to treat all elements of the crane very carefully.

For damages occurred due to inappropriate treatment we do not accept any warranty claims.

After working with the crane, particularly after working in a dirty, dusty, sandy, wet and salty surrounding, the crane has to be cleaned and maintained very carefully. Please keep the safety belts in good condition.

Interrupt the work with the crane immediately, if only a small part of the crane is damaged or missing.

Maintenance and repair should only be made by trained and competent persons. Panther GmbH offers service seminars, which will be held according to your desires. For exact dates, please call 089/61390030 (Panther-Service).

According to ZH 1/222 / 3.2 and UVV VBG 70 § 34, the safety and machine appliances have to undergo an interim check up by a competent person at least every 4 years and at least every year by an expert (repeated check up - see maintenance book).

If necessary, parts of the crane have to be exchanged.





# cinerent swissjib

